

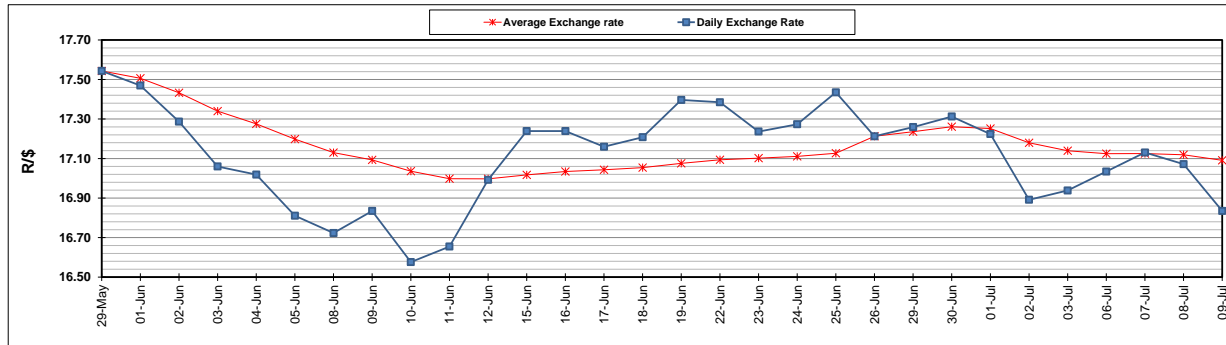
	PETROL 95 ULP	PETROL 93 ULP & LRP	DIESEL 0.05%	DIESEL 0.005%	ILL. PAR.
GAUTENG PUMP PRICE (SA c/l) AS FROM 01/07/2020	1,512.000	1,483.000	-	-	-
WHOLESALE PRICE (SA c/l) AS FROM 01/07/2020	-	-	1,303.560	1,307.960	703.828
SINGLE NATIONAL MAXIMUM RETAIL PRICE	-	-	-	-	882.000
BASIC FUEL PRICE - 09/07/2020 (SA c/l)	558.438	544.843	579.008	583.370	510.803
PRESS RELEASE CONTRIBUTION TO BFP 01/07/2020 - 09/07/2020 (SA c/l)	564.770	545.770	552.630	557.030	499.128
UNIT OVER/(UNDER) RECOVERY - 09/07/2020 (SA c/l)	6.332	0.927	(26.378)	(26.340)	(11.675)
AVERAGE BASIC FUEL PRICE 26/06/2020 - 09/07/2020	560.018	543.505	582.247	586.284	512.976
AVERAGE UNIT OVER/(UNDER) RECOVERY 26/06/2020 - 09/07/2020	(46.848)	(46.635)	(81.517)	(79.954)	(78.048)

ANALYSIS MOVEMENT OF AVERAGE OVER/(UNDER) RECOVERY

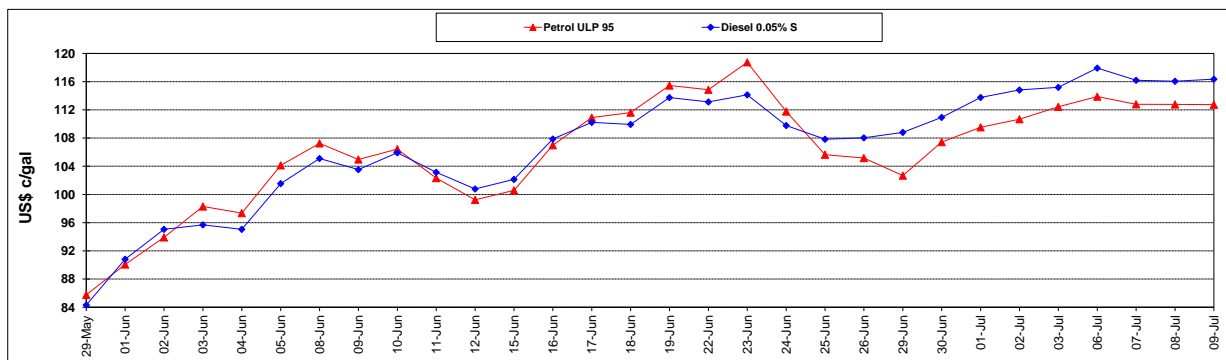
	PETROL 95	PETROL 93	DIESEL 0.05%	DIESEL 0.005%	ILL. PAR.
- MOVEMENT IN INTERNATIONAL PRODUCT PRICES	(48.034)	(47.786)	(82.750)	(81.196)	(79.135)
- MOVEMENT IN EXCHANGE RATE	1.186	1.151	1.233	1.242	1.087
AVERAGE UNIT OVER/(UNDER) RECOVERY 26/06/2020 - 09/07/2020	(46.848)	(46.635)	(81.517)	(79.954)	(78.048)

R/\$ EXCHANGE RATE - (R/\$16.8348 - 09/07/2020)

EXCHANGE RATE USED IN BASIC FUEL PRICE



INTERNATIONAL PRODUCT PRICES OF BASKET USED IN BASIC FUEL PRICE



BASIC FUEL PRICE IN SA CENTS PER LITRE

